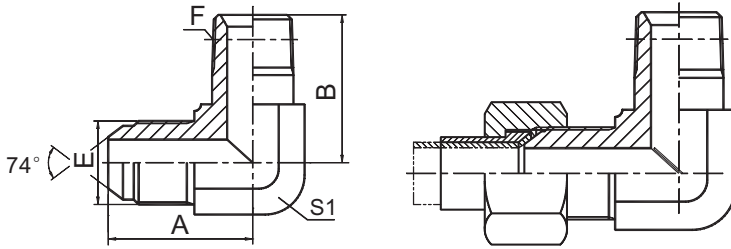


过渡接头 ADAPTER



1JN9-L

90° JIC 外螺纹 74° 外锥 / 加长布锥管外螺纹
90° JIC MALE 74° CONE/LONG NPT MALE

| 代号 PART NO. | 螺纹 THREAD | | 尺寸 DIMENSIONS | | | |
|----------------|------------|--------------|---------------|-------|----|--|
| | E | F | A | B | S1 | |
| 1JN9-04-02L | 7/16"X20 | Z1/8"X27 | 24.5 | 30 | 11 | |
| 1JN9-04L | 7/16"X20 | Z1/4"X18 | 26.6 | 40.1 | 14 | |
| 1JN9-05-02L | 1/2"X20 | Z1/8"X27 | 26.6 | 31 | 14 | |
| 1JN9-05-04L | 1/2"X20 | Z1/4"X18 | 26.6 | 40.1 | 14 | |
| 1JN9-06-04L | 9/16"X18 | Z1/4"X18 | 26.9 | 40.1 | 14 | |
| 1JN9-06-08L | 9/16"X18 | Z1/2"X14 | 32 | 55.1 | 22 | |
| 1JN9-08-06L | 3/4"X16 | Z3/8"X18 | 32 | 46.2 | 19 | |
| 1JN9-08L | 3/4"X16 | Z1/2"X14 | 34.8 | 55.1 | 22 | |
| 1JN9-10-08L | 7/8"X14 | Z1/2"X14 | 37.8 | 55.1 | 22 | |
| 1JN9-12-08L | 1.1/16"X12 | Z1/2"X14 | 44.2 | 56.9 | 27 | |
| 1JN9-12L | 1.1/16"X12 | Z3/4"X14 | 44.2 | 62 | 27 | |
| 1JN9-16-12L | 1.5/16"X12 | Z3/4"X14 | 49 | 69.9 | 33 | |
| 1JN9-16L | 1.5/16"X12 | Z1"X11.5 | 49 | 76.5 | 33 | |
| 1JN9-20L | 1.5/8"X12 | Z1.1/4"X11.5 | 55.5 | 93.7 | 41 | |
| 1JN9-24L | 1.7/8"X12 | Z1.1/2"X11.5 | 62.5 | 104.1 | 48 | |
| 1JN9-32L | 2.1/2"X12 | Z2"X11.5 | 78 | 122.2 | 63 | |

注：螺母及衬套需另行订货。管子直径D为公制时，配用螺母及衬套分别选用NB200、NB500。管子直径为英制时，配用螺母及衬套分别选用NB200、NB300。 Note: Nut and sleeve should be ordered separately. The nut NB200 and sleeve NB500 is suitable for metric tube, the nut NB200 and sleeve NB300 is suitable for inch tube.